

# Coffey Time

Vol. 6, Issue 6

Page 1 of 3

June, 2010

## Riverside Arts Walk on First Thursdays—June 3, 6pm – 9pm

See visual and performing arts events at over 20 locations—including **RAM, RCAA** and **Division 9**. Many locations offer free hors d'oeuvres and wine. Stores and restaurants will be open, some with discounts. Get the ArtsWalk map at RCAA or RAM. More info: [www.RiversideCulturalConsortium.org](http://www.RiversideCulturalConsortium.org).

**Riverside Art Museum(RAM)** 3425 Mission Inn Av, 951-684-7111  
Mon-Sat., 10am-4pm, Thu. 10am-8pm [www.riversideartmuseum.org](http://www.riversideartmuseum.org)

**Seeing and Saying Exhibition**, thru August 19, 2010, features selections from the RAM's permanent collection. Viewers are encouraged to actively participate in the art itself... with the goal to "create an intimate relationship between the viewer and the work."

**Sumi Ink Club at RAM** thru July 31, 2010.

**Selections from RAM's Permanent Collection:** Andrew Molles. Exhibition: thru July 31, 2010.

**Intimate Distance: The Modernism of Schuyler Standish**  
Exhibition: Thru - June 12.

**Open Studio: Paintings from the High Desert Exhibition:** June 3—Aug. 30, 2010. Reception: June 3, 6pm-9:00 pm. See paintings by **Michael Shankman**, Artist-In-Residence, Joshua Tree National Park ([www.mikeshankman.com](http://www.mikeshankman.com)).

**RAM's Gift Shop** sells artworks and creative products. Three of Joan's oil paintings are in the shop: "Castle Bridge", "Rocks in Wash" and "Boat House No. 2", as well as some of her greeting



cards, including "A Rosy View from the Botanic Garden" (which was the featured painting in the poster for Primavera in the Gardens, Tenth Anniversary at the UCR Botanic Gardens in 2008". **RAM's** website is a mother lode of information. Do browse it.

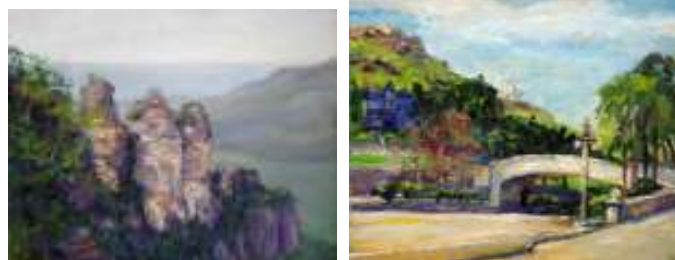
The **Plein Air Artists of Riverside (PAAR)** has a blog on it, with many updates, artist info, paintings and photos. Some of the PAAR artists, like **Joan**, have their websites linked to it. <http://pleinairartistsofriverside.blogspot.com/>.

## Riverside Arts Walk on First Thursdays (cont.)

**RCAA** 3870 Lemon St, 951-682-6737, [www.rcaaart.org](http://www.rcaaart.org)  
Mark Schooley, Director

Hours: Tues - Sat, 11 am -2 pm; or by appointment  
ArtsWalks on First Thursdays, 6 to 9pm

**May 6 - June 5:** "Spring Forth" Members Exhibit. Joan has two paintings included: "The Three Sisters" and "Buena Vista Bridge".



"A Sense Of Peace Young Artists Gallery"—Teen artists from **Santiago High School** created figurative sculptures, which will be donation vessels. Help RCAA fill them with art supplies for the children in **Riverside's sister city, Ensenada, Mexico**.

Artist Spotlight: **Ken Stansbury:** "Incidentals – An Installation". See below, left. Interesting note: Ken painted the **Riverside Ballet** mural at the parking lot across from RCAA and **Division 9 South**.



**June 10-July 10, 2010:** "Au Naturel", an exhibit by members of PAAR. Young Artists Gallery: HeArt Enterprises presents – Art Masters – Community Children's Art Program and a spotlight on Jessica McConnel." Artist Spotlight: **Joanna Mersereau** ([www.joannamersereau.com](http://www.joannamersereau.com)). The paintings Joan will display will be posted soon.

RCAA sells many creative gifts. **Joan** always has greeting cards in the racks, such as those with her mission paintings (see above).

**Division 9**, [www.division9gallery.com](http://www.division9gallery.com), 951-682-5990.

**Dir. Cosme Cordova.** Tue-Fri: 11am-7pm; Sat: 11am-2pm.

**South Gallery** is next door to RCAA. **North Gallery** is in **Life Arts Center**, 3485 University, along with many other galleries. **People's Gallery** and **Greg Adamson's** gallery are at 3643 University.

**Relish Delicatessen & Catering**, 3535 University Ave., between Lemon and Orange 951-682-7011. 8am-4pm M-Sat; open for the Arts Walks (6-9pm) June 3 & July 1, Exhibit organized by RCAA. <http://www.yelp.com/map/relish-delicatessen-riverside>

"Colorful Impressions - Paintings by **Joan Coffey**": June 2-July 31.

Enjoy seeing Joan's exhibit while enjoying the deli. See page 2 for some of the paintings that Joan may display.

# Coffey Time

Vol. 6, Issue 6

Page 2 of 3

June, 2010

## Joan's Activities & News



**Riverside National Cemetery**  
**Plein Air Exhibition by the Plein Air Artists of Riverside (PAAR)**  
22495 Van Buren Blvd, Riverside, CA 92518  
951- 653-8417, FAX: 951-653-5233, <http://www.rncsc.org/>

Thru June 5. Joan's "POW/MIA Memorial" is included. She also painted "Veterans Memorial" and "POW/MIA Flag".

## Gardens Galore

**Riverside Gardens** in May provided brilliant subjects for Joan to paint. On May 1, she was one of the PAAR's plein air painters at the **Spring Garden Tour**, sponsored by the **Art Alliance** of the **RAM**. Two **PAAR** artists captured the beauty of each of the seven garden on their painting surfaces. Below Joan paints one of her favorite subjects, bougainvillea. Thanks to the friendly local photographer/printmaker who took this photo of Joan.



Joan finished these two paintings.



The annual *Primavera in the Gardens* was on **Sunday, May 16**, in the beautiful UCR Botanic Gardens ([www.gardens.ucr.edu](http://www.gardens.ucr.edu)). Joan was one of three plein air painters. She completed a painting of the rose garden before the festivities began and worked on two additional paintings which will be posted soon.



## More gardens in Riverside...



See a photo of Joan painting "Morning Pathway" (above, left) at <http://mnico.weebly.com/june-2010-newsletter.html>.



# Coffey Time

Vol. 6, Issue 6

Page 3 of 3

June, 2010

## Joan's Activities & News (cont.)

**Corona Art Assn. at Art House Gallery, 510 W Foothill Parkway, (one block W. of Main St.)** Thur- Sat 10am-2pm. 951-735-3226.

**"Spring Fling" (thru-June 16)** includes Joan's "Rainy Afternoon".  
**"Buildings, Past or Present"** June 17-July 28. Check to see what Joan will display.



## **\*\*The exciting Banner ArtVenture continues!!\*\***

The 6-month banner **ArtVenture** (Kathy Allavie, chair; Denise Kraemer, art chair) has been continued, and banners are now hung at **Riverside Plaza**, where shoppers can enjoy seeing them at their leisure. The banner with the design of Joan's "Citrus Grove Bougainvillea" is hung just outside **RAP**.

**Pet Portraits** are part of Joan's product line. She will work from a photo that you have taken or, if you are local, one that she takes of your pet. The prices below are for one subject (additional pets \$75 each), unframed. Prices do not include shipping.

8 x 10: \$175, 9 x 12: \$200, 11 x 14 \$250



Ask about other sizes. Special pet toy or other item added for no extra charge. There is an extra charge for complex backgrounds. Allow 4-6 weeks for delivery of final painting.

## **Exhibits of other artists to see**

**Olive Market Fine Arts and Craft Show – June 5, 10am to 4pm**

530 West Olive Ave., Redlands, CA.

Presented by **Muddy Parrots and Friends**. Features works of Ricky Maldonado and other creative artists, like award-winning ceramicist **Melissa Culley** and painter/printmaker **Adeola Davies-Aiyeloja** (<http://adeolasstudio.blogspot.com>). Yes! You have heard of the Olive Market before. Joan's painting of the **Olive Avenue Market** won 2<sup>nd</sup> place in the 2007 RAA/RC Open Air competition. See it more closely at [www.coffeycreations.com/watercolors.php](http://www.coffeycreations.com/watercolors.php).

**Rejuvenate Chiropractic Spa**. 1525 E Ontario Ave., #104, Corona, CA 92881. 951-279-8900.

This 6-month exhibit features art by 14 **Corona Art Assn** artists, including **Ira Yawnick, Jill Jones, Cathi Calhoun, Michael Mazgai, Bill Dagleish, Adeola Daview-Aiyeloja, Mark Disney, Susan De'Armond**, and more. [www.coronaartassociation.org](http://www.coronaartassociation.org).

**The Irvine Museum**, 18881 Von Karman, Irvine, CA. 949-476-2565, Tue-Sat, 11-5. [www.irvinemuseum.org](http://www.irvinemuseum.org).

**Thru June 5, 2010:** El Camino de Oro: Journey Through early California". Be sure to see the art treasures in this fine museum.  
**June 16-Oct. 23, 2010:** "Saving Paradise".

**Riverside County Administrative Center** 4080 Lemon Street, Riverside, CA 92501, (951) 680-1345; M-Th, 9 to 5

**Artscape Spring and Summer, 2010.** ArtScape exhibitions are consistently exciting, eclectic displays of art. Do stop by and see it.

**Gerard's Eve Bistro**, 9814 Magnolia, Riverside. 951-687-4882. [www.gerardsevebistro.com](http://www.gerardsevebistro.com)

**"Interpretations": Pastel Paintings** by **Ada M. Passaro**. See beautiful paintings in an elegant setting, Wed thru Fri, 11am to 9pm.

## **Pasadena Museum of California Art**

490 E. Union St. Pasadena, CA 91101, | (626) 568-3665

**June 13 – July 3.** California Art Club 99<sup>th</sup> Annual Gold Medal Juried Exhibition. It's the best exhibition around.

## **The Brandon Gallery**

105 N. Main St., Fallbrook, CA. (760) 723-1330.

**"My Color is Mixed with Light": The Art of David Musser.**  
**June 1-30**, reception June 6, 1-4pm. [www.davidmusserfineart.com](http://www.davidmusserfineart.com)

## **Redlands Art Assn**

215 E State St., Redlands, 909-792-8435, M-Sat. 10am-5pm.

**The Ring Festival** pertains to the first-ever presentation in Los L.A. of the four-opera drama Wagner's The Ring of the Nibelung.

**Robert V. Fullerton Art Museum, California State University, San Bernardino, 5500 University Parkway, San Bernardino, CA 92407.** <http://museum.csusb.edu>. 909-537-7373

"Timeless Enchantment": Retelling of Richard Wagner's Ring of the Nibelung in Visual Arts and Performance. April 8 – July 31, 2010.

**The Ring Cycle** juried exhibition at the **Cathedral of Our Lady of the Angels, May 10-July 16, 2010**; <http://www.ringfestivalla.com/>

## **Other Notes of Interest:**

**Art Views:** [RCAA](http://RCAA) 3870 Lemon St, 951-682-6737, [www.rcaaart.org](http://www.rcaaart.org)

June 8, 7pm (social networking. 6:30). Ongoing on 2<sup>nd</sup> tuesday of the month. Bring your art to show & discuss

**Cyber World** See Joan's website [www.coffeycreations.com](http://www.coffeycreations.com) to view & purchase her art and read her newsletter. **Coffey Time** gets updated online during the month, so check it often. See [www.InlandArts.com](http://www.InlandArts.com) for art happenings in the Inland Empire, as well as bios & website links of artists, like **Joan, Terry d. Chacon, Lisa Mozzini-McDill and Joanna Mersereau**. Click "Directories" at top, then "Artists Profiles". Other sites: **Susan De'Armond** ([www.sdearmond.com](http://www.sdearmond.com)), **Cathy Maxwell** ([maxwellmosaics.com](http://maxwellmosaics.com)), **Michael Mazgai** ([mjmazgai.weebly.com](http://mjmazgai.weebly.com)), **r. mike nichols** ([mnico.weebly.com](http://mnico.weebly.com))

Interested in quilting? See [quiltfabric.com](http://quiltfabric.com), where you can order a "How to Make Your First Quilt" dvd created by Joan's friend, **Karen Oliver**, and **Chris Sass**, the **Quilt Fabric** store owner.